

GE Healthcare



Simple is better.

MAC 2000 ECG Analysis System
Streamlined for your practice



Simple is
smart.

Your busy practice needs simple solutions. Equipment that simply works, every time. Technology that delivers clear, accurate data in simple ways. Intuitive tools that are simple to use. And support you can count on without question.

Simple.

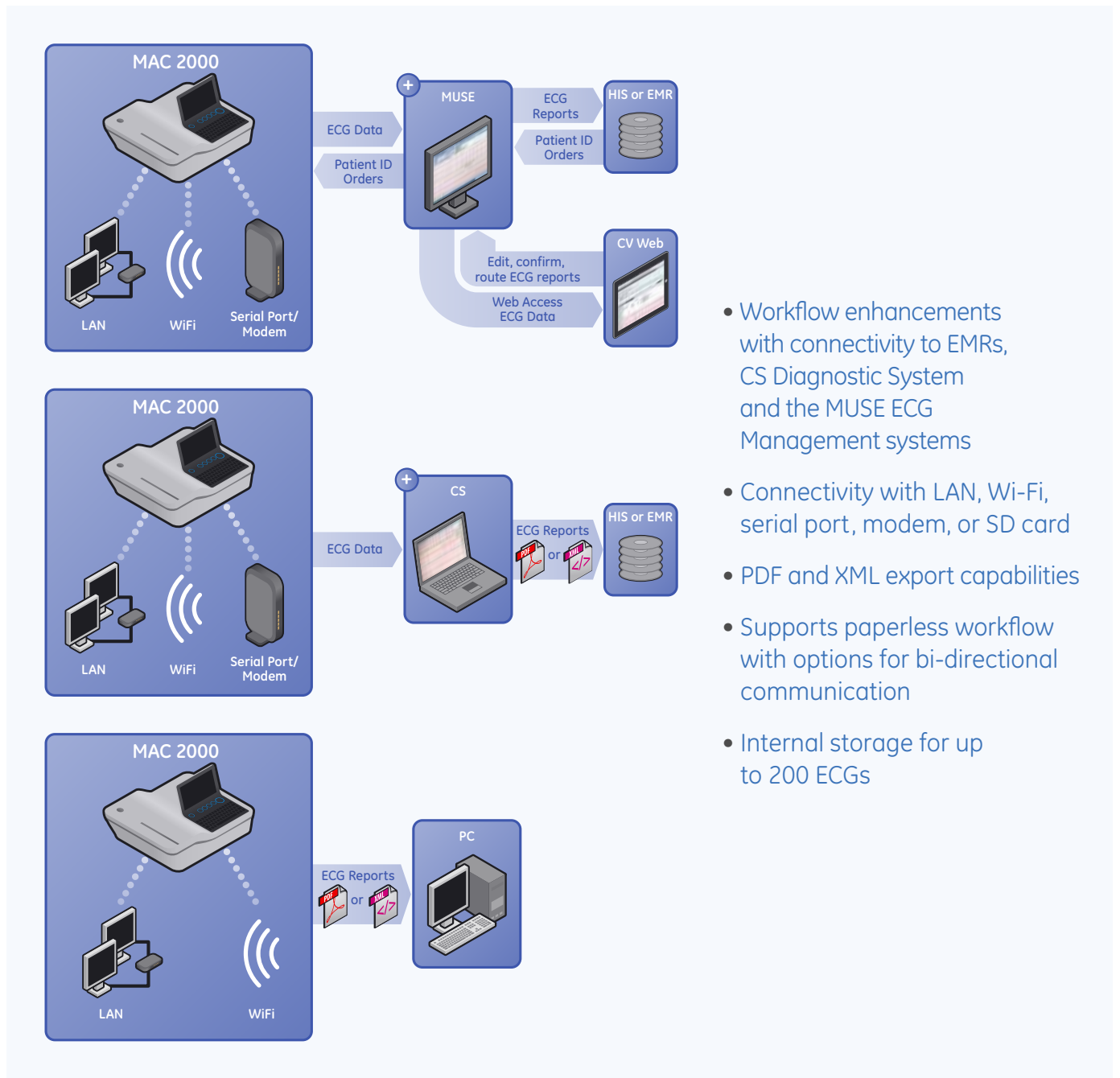
And smart. The new MAC* 2000 from GE Healthcare helps the clinician make a fast and accurate diagnosis with the power of the Marquette* 12SL analysis program. It's the proven[†] diagnostic support you need to help avoid variations in care throughout your healthcare system.

Really, really smart.



Simple is connected.

Busy health systems need streamlined data connectivity throughout the continuum of care, without the time-consuming complexity. That's why the MAC 2000 is designed to connect seamlessly with your existing clinical systems, keeping you in touch with your data and your patients. It's the system that works like you do—and can change with you.



- Workflow enhancements with connectivity to EMRs, CS Diagnostic System and the MUSE ECG Management systems
- Connectivity with LAN, Wi-Fi, serial port, modem, or SD card
- PDF and XML export capabilities
- Supports paperless workflow with options for bi-directional communication
- Internal storage for up to 200 ECGs

Simple is productive.



- Automatic capture of 10-second ECGs with one-touch operation
- Easy-to-read 7" color display is configurable to meet your needs
- Multiple connectivity and export options for easy data access and storage
- Marquette 12SL ECG analysis program for clinical decision support



The MAC 2000 enables your practice to be productive, from the first ECG. Tools such as HookUp Advisor* allow you to identify a quality signal before acquisition, helping avoid costly repeat ECGs. It's all part of a smarter, simpler workflow that lets you do more in less time—so you can focus on patients. And you'll be able to do it all from day one.

Simple is reliable.



- Proven Marquette 12SL ECG analysis program with measurement and interpretation
- Arrhythmia detection
- ACI-TIPI algorithm to assist in identifying the risk of acute cardiac ischemia
- Gender-specific analysis improves relative sensitivity for detecting inferior Acute Myocardial in women by 28 percent.¹



You strive to provide the best possible care for your patients. That means having access to the best clinical technology. The MAC 2000 empowers you with the Marquette 12SL analysis program and a complete set of analysis tools you can trust, because they've been rigorously validated against clinically correlated databases with multiple patient populations. It's clinical decision support made simple.

¹J. Am. Coll. Cardiology. 2001;37:361a.

Simple is supported.

The MAC 2000 makes it simple the moment you open the box. Easy installation won't disrupt your practice. The familiar, intuitive interface with full keyboard means you and your nursing staff won't need days of training—more like minutes.

And because we know training needs can change with your team, we offer convenient computer-based training tools for on-demand learning.

Expert GE Healthcare service and support are always just a call away—our extensive network of trained professionals are ready so you don't have to wait for help. Many issues can even be resolved remotely, keeping downtime to a minimum. It's another way the MAC 2000 embraces simplicity to give you a hassle-free experience.





Simple is
here.

It's time to make ECG simpler. To learn more about the MAC 2000 ECG, contact your GE Healthcare representative or visit www.gehealthcare.com.

©2014 General Electric Company – All rights reserved.

General Electric Company reserves the right to make changes in specifications and features shown herein, or discontinue the product described at any time without notice or obligation. Contact your GE representative for the most current information.

GE and GE Monogram are trademarks of General Electric Company.

*CS, HookUp Advisor, MAC, Marquette, and MUSE are trademarks of General Electric Company.

All other product names and logos are trademarks or registered trademarks of their respective companies.

GE Healthcare, a division of General Electric Company

About GE Healthcare

GE Healthcare provides transformational medical technologies and services that are shaping a new age of patient care. Our broad expertise in medical imaging and information technologies, medical diagnostics, patient monitoring systems, drug discovery, biopharmaceutical manufacturing technologies, performance improvement and performance solutions services helps our customers to deliver better care to more people around the world at a lower cost. In addition, we partner with healthcare leaders, striving to leverage the global policy change necessary to implement a successful shift to sustainable healthcare systems.

Our “healthymagination” vision for the future invites the world to join us on our journey as we continuously develop innovations focused on reducing costs, increasing access and improving quality around the world. Headquartered in the United Kingdom, GE Healthcare is a unit of General Electric Company (NYSE: GE). Worldwide, GE Healthcare employees are committed to serving healthcare professionals and their patients in more than 100 countries. For more information about GE Healthcare, visit our website at www.gehealthcare.com.

www.gehealthcare.com



imagination at work